



225 Pennsylvania Avenue, S.E.
Washington, D.C. 20003

7/12/00

Tel : 202.544.3900

Fax : 202.546.1771

www.johncformant.com



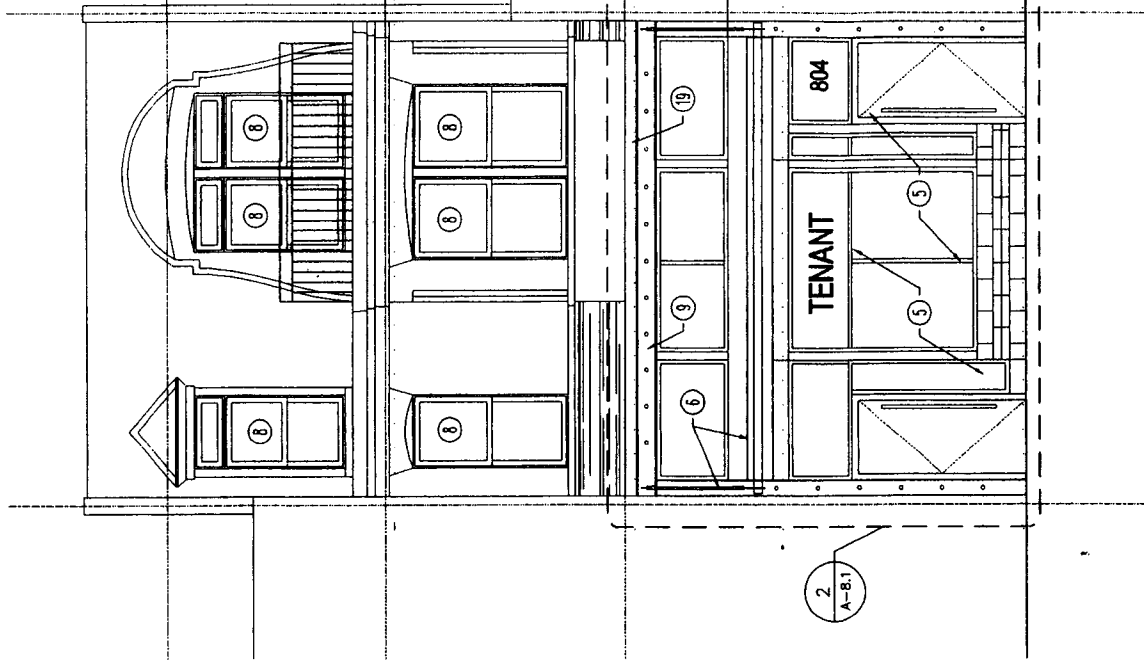
these are renderings
+ Floorplans for 804 H
SF NE

A handwritten signature in black ink, appearing to be "J. Formant".

I can give you a tour
if you wish

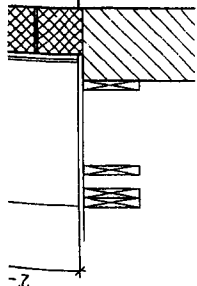
A handwritten signature in black ink, appearing to be "J. Formant".

2
A-3.0
1/4" = 1'-0"

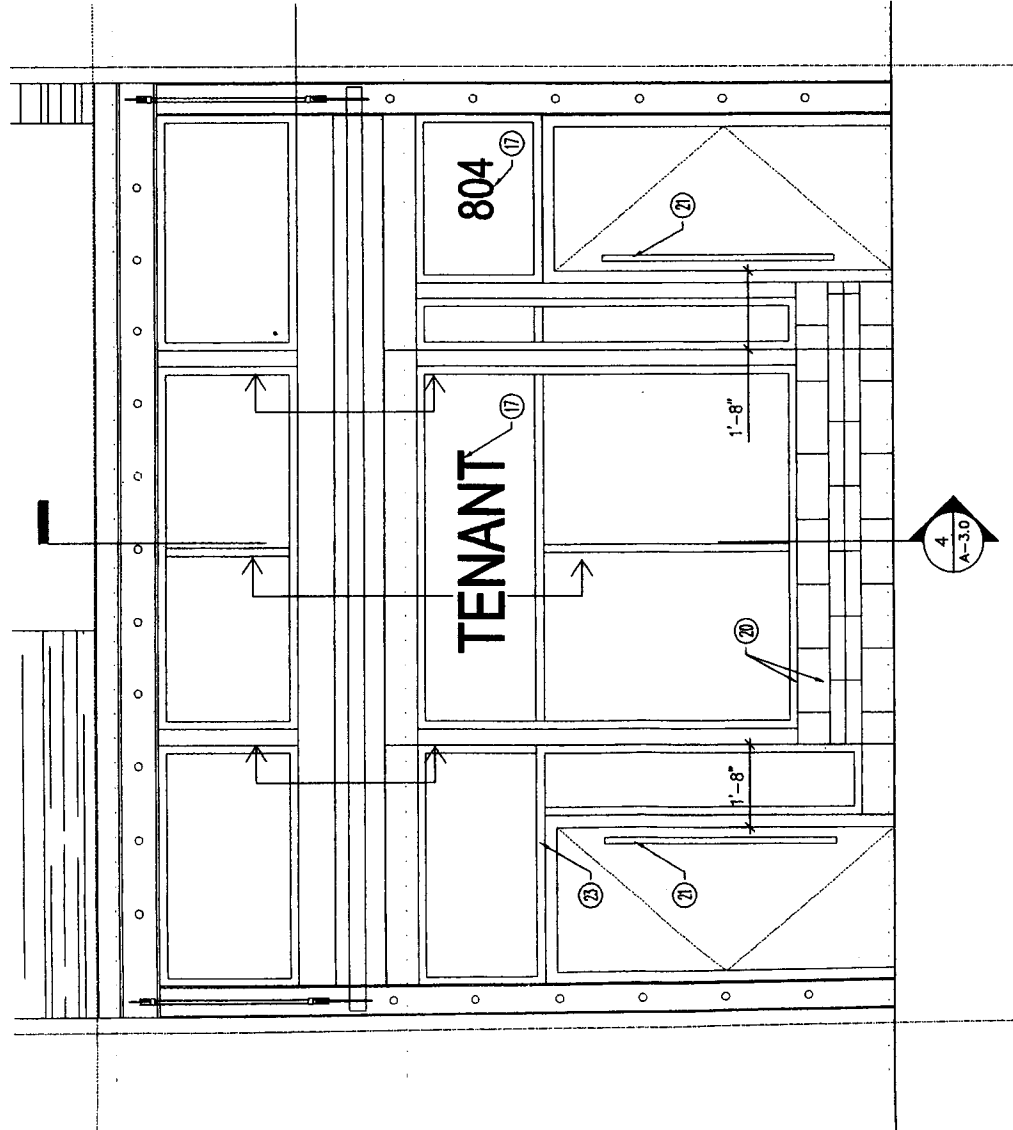


1
A-3.0
1/4" = 1'-0"

SOUTH ELEVATION

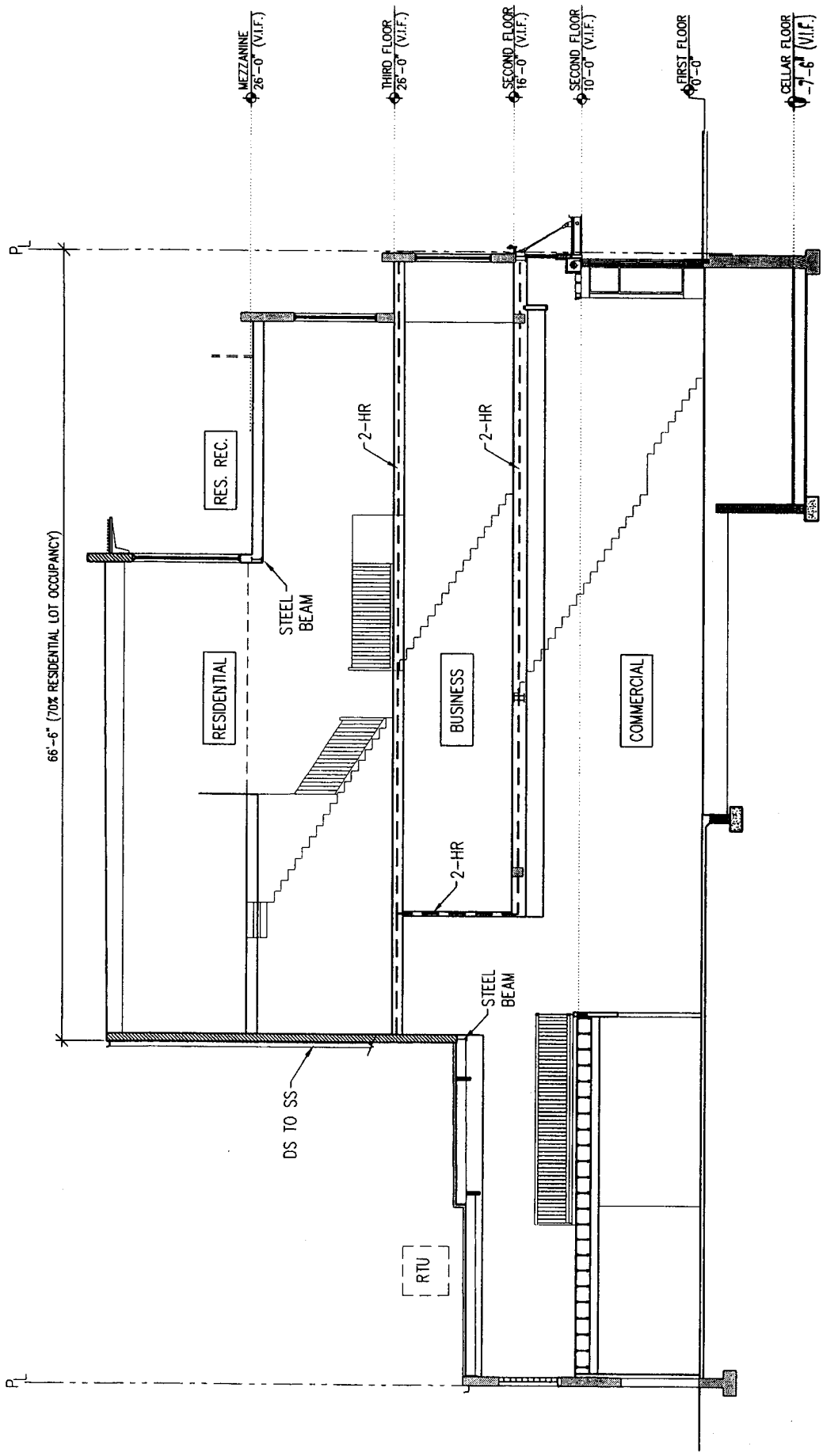


4
A-3.0
3/4" = 1'-0"



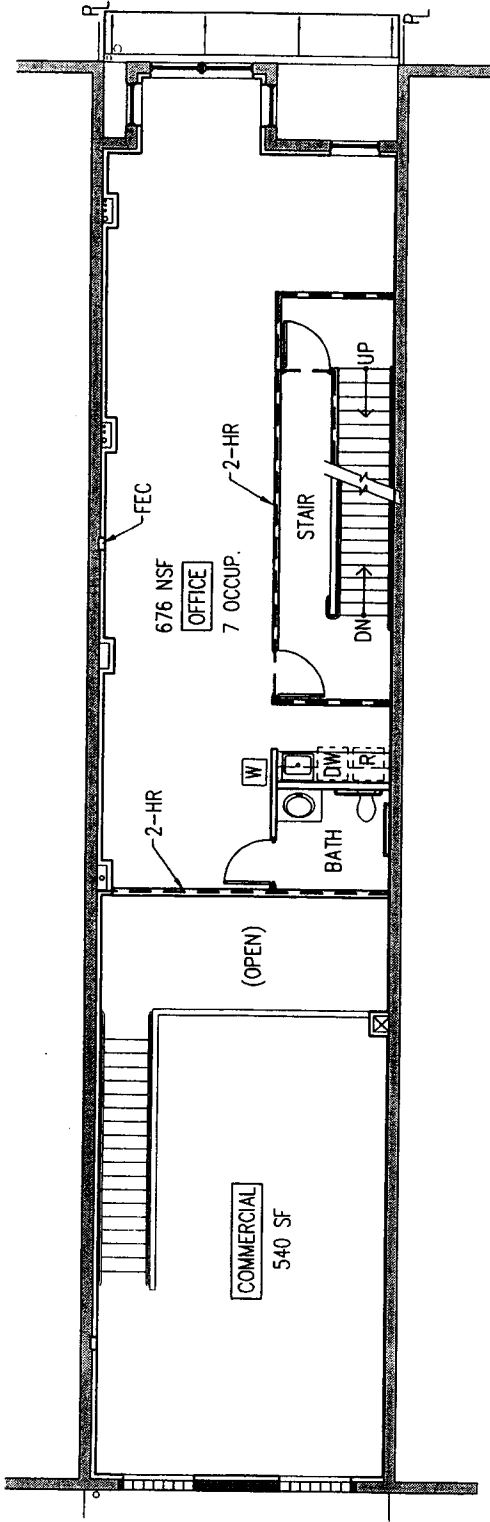
3
A-3.0
1/2" = 1'-0"

SOUTH ENTRY ELEVATION

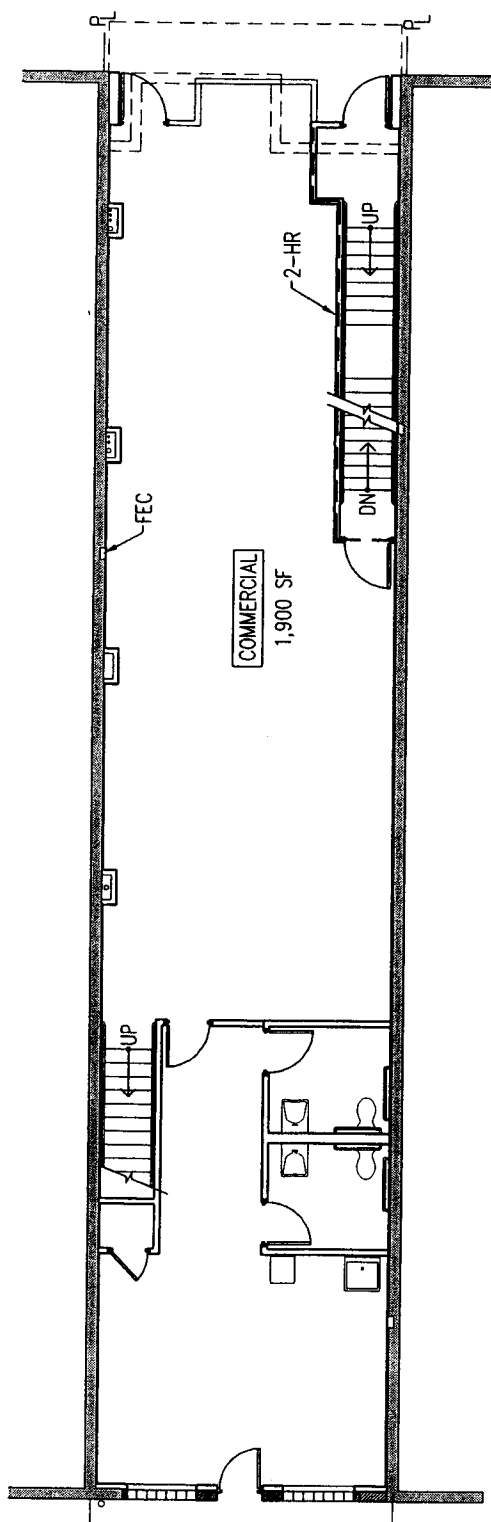


BUILDING SECTION SCALE: 1/8"=1'-0"

804 H STREET, NE
 OVERLAY RENOVATION & ADDITION
 FEBRUARY 2, 2006



SECOND FLOOR PLAN SCALE: 1/8"=1'-0"



GROUND FLOOR PLAN SCALE: 1/8"=1'-0"

804 H STREET, NE

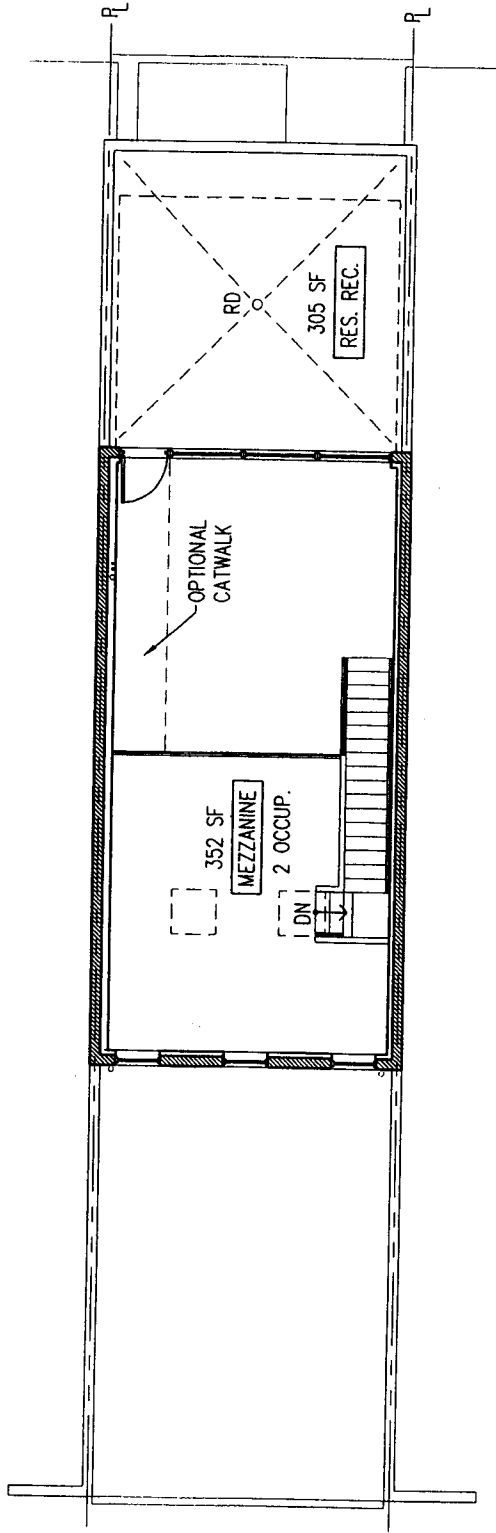
OVERLAY RENOVATION & ADDITION
FEBRUARY 2, 2006

Bonstra Haresign
ARCHITECTS

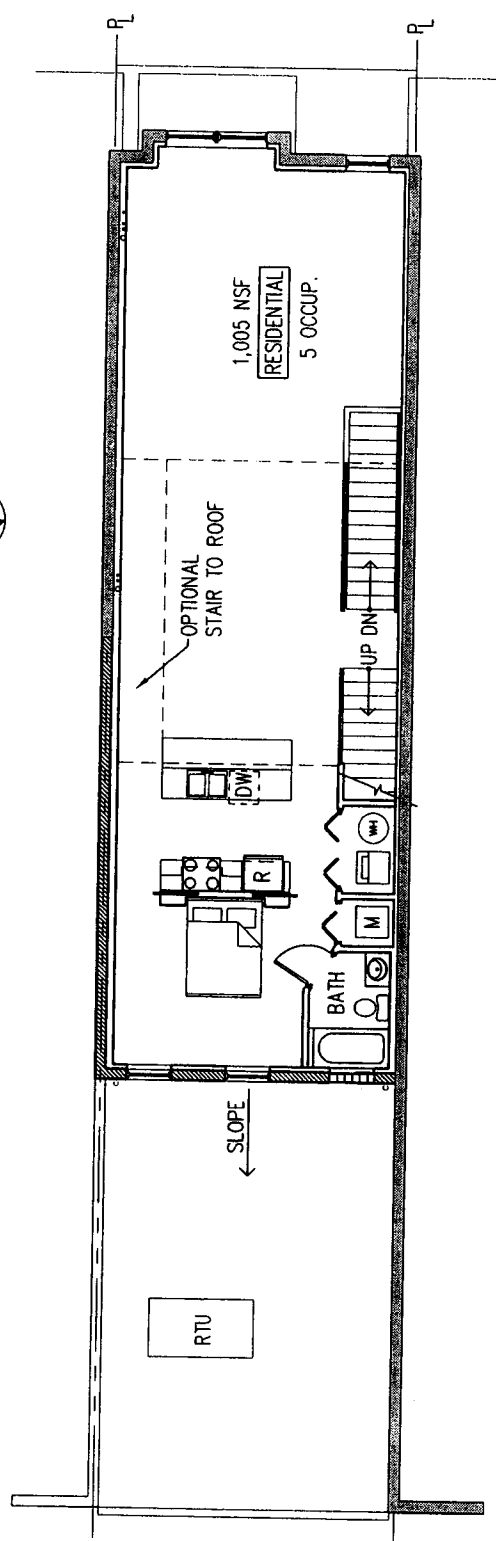
JOHN C. FORMANT
REAL ESTATE, INC.

© 2006 BONSTRA HARESIGN ARCHITECTS

FILE
SK-4



MEZANINE FLOOR PLAN SCALE: 1/8"=1'-0"



THIRD FLOOR PLAN SCALE: 1/8"=1'-0"

804 H STREET, NE

OVERLAY RENOVATION & ADDITION
FEBRUARY 2, 2006

Bonstra | Haresign

JOHN C. FORMANT
REAL ESTATE, INC.

© 2006 BONSTRA | HARESIGN ARCHITECTS

PAGE
SK-5