

# The Buzz

North  
Lincoln Park's  
Neighborhood Newsletter

January 2011

Volume 22 Number 1

## NLPNA DOES NOT MEET IN JANUARY

### Evolve Urban Arts

Evolve Property Management presents "Flights of Fancy," featuring works by Studio Gallery Artists Iwan Bagus, Peter Karp, Micheline Klagsburn, Trix Kuijper, Joyce McCarten, and Langley Spurlock at the Evolve Urban Arts Gallery @ Pierce School Lofts, 1375 Maryland Ave. NE.

These DC based artists all create works which embody or employ key elements of Surrealism. The Surrealist movement, formed in the early 20th century as a response to the chaos of World War I, encouraged its adherents to emphasize random play, free association, and creative juxtaposition within visual arts and literature.

A free opening reception will be held from 5-8 p.m. on Saturday, January 15.

Hours at the gallery are 1-5 p.m. Mondays through Thursdays, 1-7 p.m. Fridays, and 11 a.m. - 2 p.m. Saturdays. The show will continue through February 28. The exhibit is free and the public is welcome. To learn more, visit <http://art.evolvedc.com>.



Dryope: Transforming by Micheline Klagsburn

### Library Programs

The Northeast Branch Library's programs include:

- ♦ Teen Advisory Group, Wed. Jan. 5, 5:30-7:30 p.m.
- ♦ Story Times for Ages 3-8, Mon. Jan. 3, 10, 24, 31, 4 p.m.
- ♦ Toddler Times, Tues. Jan. 4, 11, 18, 25 & Thurs. Jan. 6, 13, 20, 27, 11:15 a.m.
- ♦ Teen Movie Night, Wed. Jan. 12, 5:30-7:30 p.m. Ages 12-19.
- ♦ Book Talk with Pam Ehrenberg, Tues. Jan. 18, 4-5 p.m. Ages 12-19.
- ♦ Teen Gaming Night, Wed. Jan. 19, 5:30-7:30 p.m. Ages 12-19.
- ♦ Black History Trivia Contest, Wed. Jan. 26, 4-6 p.m. Ages 12-19.
- ♦ Origami Club, Thurs., Jan. 20, 4-5 p.m. Ages 6-12.
- ♦ French Story Time, Sat. Jan. 15, 10:30 a.m.

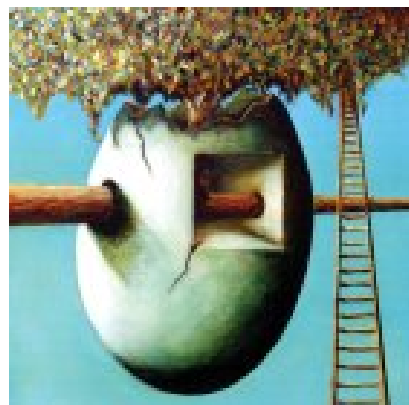
The library, at 7th St. and Maryland Ave. NE (698-3320), is closed on Sundays and on Jan. 1 and 17.



Steps by Peter Karp

### COMMUNITY CALENDAR

- **NLPNA does not meet in January.**
- **PSA 103 meeting**, 2nd Wed. (Jan. 12), 7 p.m., Miner ES, 601 15<sup>th</sup> St. NE.
- **Maury ES Open Houses**, Tues., Jan. 11, 9 a.m. and 6:30 p.m., 1250 Constitution Ave. NE. *See article.*
- **ANC 6A meeting**, second Thurs. (Jan. 13), 7 p.m., Miner ES, 601 15<sup>th</sup> St. NE. For more info, visit [www.anc6a.org](http://www.anc6a.org).
- **Evolve Gallery Opening**, Sat. Jan. 15, 4-7 p.m., Pierce School Lofts, 1375 Maryland Ave. *See article.*
- **History of Near Northeast**, Wed. Jan. 19, 6 p.m. - 7:15 p.m., Ebenezers Coffeehouse, 201 F Street, N.E. *See article.*
- **NLPNA meeting**, 1st Tues. (Feb. 1), 7:30 p.m., Lane Memorial CME Church, 14<sup>th</sup> and C St. NE.
- *The Buzz* is available at [www.anc6a.org/publications.html](http://www.anc6a.org/publications.html). Staff can be reached at 543-3512 or [elizabeth\\_knits@yahoo.com](mailto:elizabeth_knits@yahoo.com).



Interruption by Trix Kuijper

### **Recyclelopes For Sale!**

The Stuart Hobson Middle School Environmental Club makes “Recyclelopes,” envelopes out of old wall calendars. They cost \$5 per set and are available for sale at Riverby Books, 419 East Capitol St. SE. One hundred percent of the funds raised from the sale of Recyclelopes goes to support the club’s activities. Recyclelopes are fun to use, and they help the environment!

### **Maury Elementary – 2011**

by Heather Schoell

Friends, come see what’s happening at your neighborhood school in 2011! Maury will have two open houses on Tuesday, January 11 at 9 a.m. and 6:30 p.m. Meet the principal, visit with current parents, tour the school, and learn about the exciting things Maury has going on!

Another opportunity to learn about the school is at our packed PTA meetings – the next one is January 20 at 6:30 p.m. Hear from our committee chairs on the status of our grants, greening, middle school meetings, and academic strategies – including our brand-new hands-on learning lab. For more information, visit us at 13th St. and Constitution Ave. NE or [www.mauryelementary.com](http://www.mauryelementary.com) – or call 698-3838.

### **Buzz Distributors Needed**

Volunteer distributors are needed for the 400-500 blocks of 11th St., 500 block of 13th St., 100 block of 15th St., 1100 block of Park St., 1200 block of F St., 1500 block of Constitution Ave., 1500 block of North Carolina Ave., and 100-200 blocks of Tennessee Ave.

This is a good opportunity for a young person to earn community service hours. Contact *The Buzz*.

#### **THE BUZZ EDITORIAL TEAM**

Elizabeth Nelson  
Suzanne Wells  
Jennie Allen

### **Learn About Development History of Near Northeast**

by Donna Hannousek, CHRS

The Capitol Hill Restoration Society (CHRS) is sponsoring a presentation by EHT Traceries, the architectural history firm that has been documenting the history of the buildings outside the boundaries of the Capitol Hill Historic District.

This presentation will describe the development history of the neighborhood adjacent to the H Street commercial corridor (roughly, from 2nd to 15th Street and from H to F Street N.E.). You will hear about Swampoodle, as well as the transportation and government industries that helped give rise to the Near Northeast’s development. Learn the distinctions among Italianate, Queen Anne, Colonial Revival, and Classical Revival building styles, as explained by knowledgeable architectural historians, and enjoy the beautiful images of the handsome building stock with a better understanding of the architectural details.

This phase of the greater Capitol Hill survey was funded by the Louis Dreyfuss Property Group, as mitigation for the demolition of 12 historic buildings to make way for their new mixed-use development on Square 752 (approximately bounded by G and H Streets and 2nd and 3rd Streets N.E.).

The event will be held on Wednesday, January 19 from 6-7:15 p.m. at Ebenzers Coffeehouse, 201 F Street, N.E. (lower level). It is free and open to the public as part of the CHRS “Beyond the Boundaries” program, which seeks to promote the appreciation of neighborhood history and support historic preservation efforts outside the boundaries of the Capitol Hill Historic District.

You can get details about all of CHRS’s events on its website, [www.chrs.org](http://www.chrs.org).

### **What’s “On” in January**

by Kathleen Donner

January is a month of community service. It’s also a month to ice skate out-of-doors and enjoy the warmth of a museum or a new restaurant. On Thursdays and first Saturdays, learn how to Tango in Eastern Market’s North Hall. Beginning lessons are at 7 p.m. and intermediate lessons at 8 p.m. At 9 p.m. dancers continue dancing into the evening. Lessons are \$10, plus \$12 to stay on and dance. Great fun!

The magnificent Season’s Greenings display at the U.S. Botanic Garden will be dismantled on January 2 but you can take a free conservatory tour on Monday, January 10 at noon and a medicinal and poison plants tour on Tuesday, January 11 at noon. Experience the power of Elvis Presley and the explosive impact he had on music and popular culture at the Newseum through February 14.

A bit out of our neighborhood but the place to be on MLK Day (January 17) is the Washington National Cathedral. This annual tribute celebrates the legacy of Dr. King through service projects, interfaith dialogue, and performances of our city’s rich music and dance heritage. Admission is a donation of a non-perishable canned food item or a new children’s book. The program is at 2 p.m.

The area’s Christmas trees are gone early in the month but Rosslyn’s skyline stays lit until the end of January.

Find hundreds of things to do every day in DC and the neighborhood at [www.whatsoncity.net](http://www.whatsoncity.net).

### **Hypothermia Hotline**

The Hypothermia Watch Partner Program provides emergency shelter for District residents between November 1 and March 31. Call the 24-hour Shelter Hotline at 1-800-535-7252 to request assistance. Life-threatening situations should be reported to 911.