

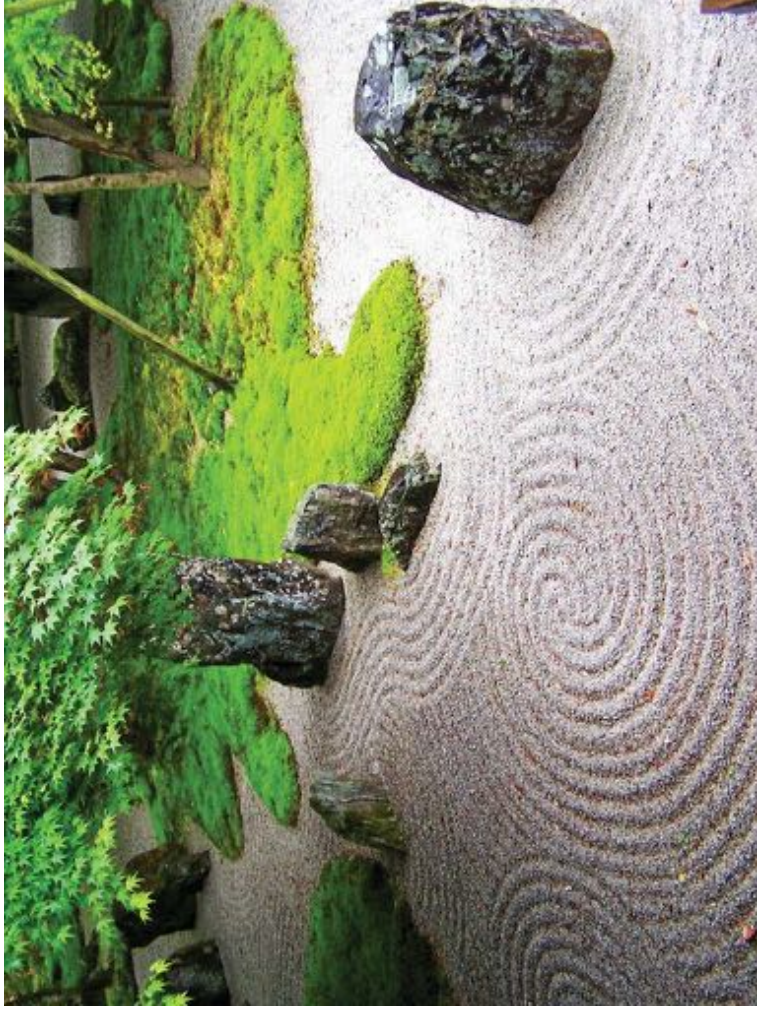
DPR ZEN PARKS
CONCEPT DESIGN

LEE AND ASSOCIATES , INC.

AUGUST 17, 2015



- 'ZEN GARDEN' COINED BY AN AMERICAN IN THE MID-1900'S AND IS NOT USED IN JAPAN
- SOME ZEN SCHOOLS WERE OPPOSED TO ANY TYPE OF GARDENS
- SOME ZEN SCHOOLS INCORPORATED MEDITATION INTO THEIR PRACTICE, OTHERS DID NOT
- OFTEN DESIGN AND MAINTENANCE OF THE GARDENS (RAKING, PRUNING, ETC.) SERVED AS OPPORTUNITIES TO PRACTICE MEDITATION



THE DRY GARDEN (KARESANSUI + HIRINIWA)

- METAPHORIC LANDSCAPES: PEBBLES TO SUGGEST WATER, RIPPLES FORMED BY RAKING, UPRIGHT BOULDERS SUGGESTING ISLANDS OR LAND

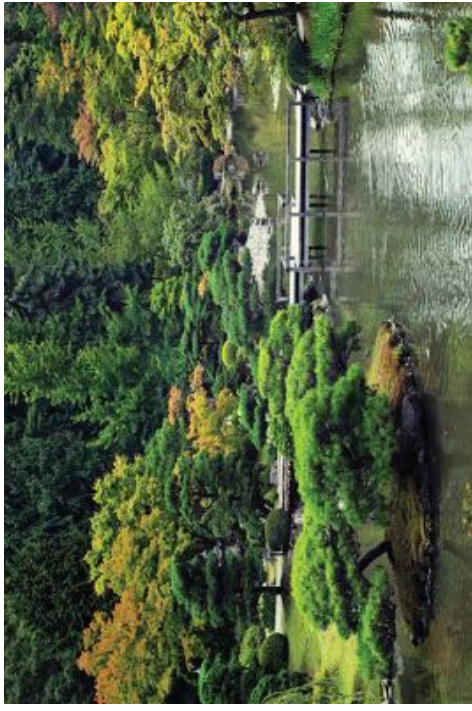




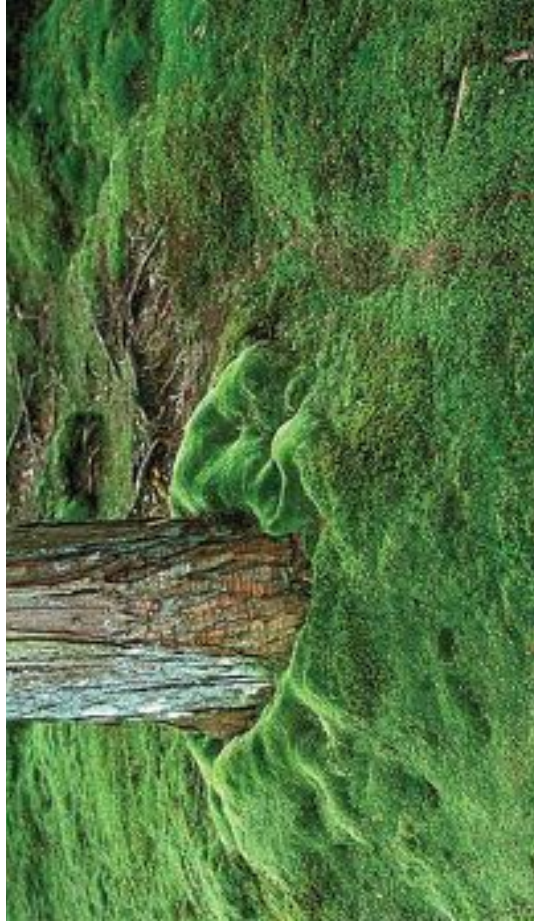
THE TOPIARY GARDEN (UEKI NO TE IRE)



THE DRY GARDEN (KAREANSUI + HIRINIWA)



THE STROLLING GARDEN (CHISEN-KAIYU-SKIKI)



THE MOSS GARDEN



THE PARADISE GARDEN

ZEN GARDEN CONCEPTS

- HARMONY BETWEEN MAN AND NATURE
- REMOVAL FROM OUTSIDE WORLD
- INTROSPECTION AND TRANQUILITY
- EMPHASIS ON SIMPLICITY + 'EMPTY' SPACE
- BALANCE, CONTRAST, FORM, SCALE, TEXTURE AND MOVEMENT







1" = 30'

DPR ZEN PARKS | August 17, 2015

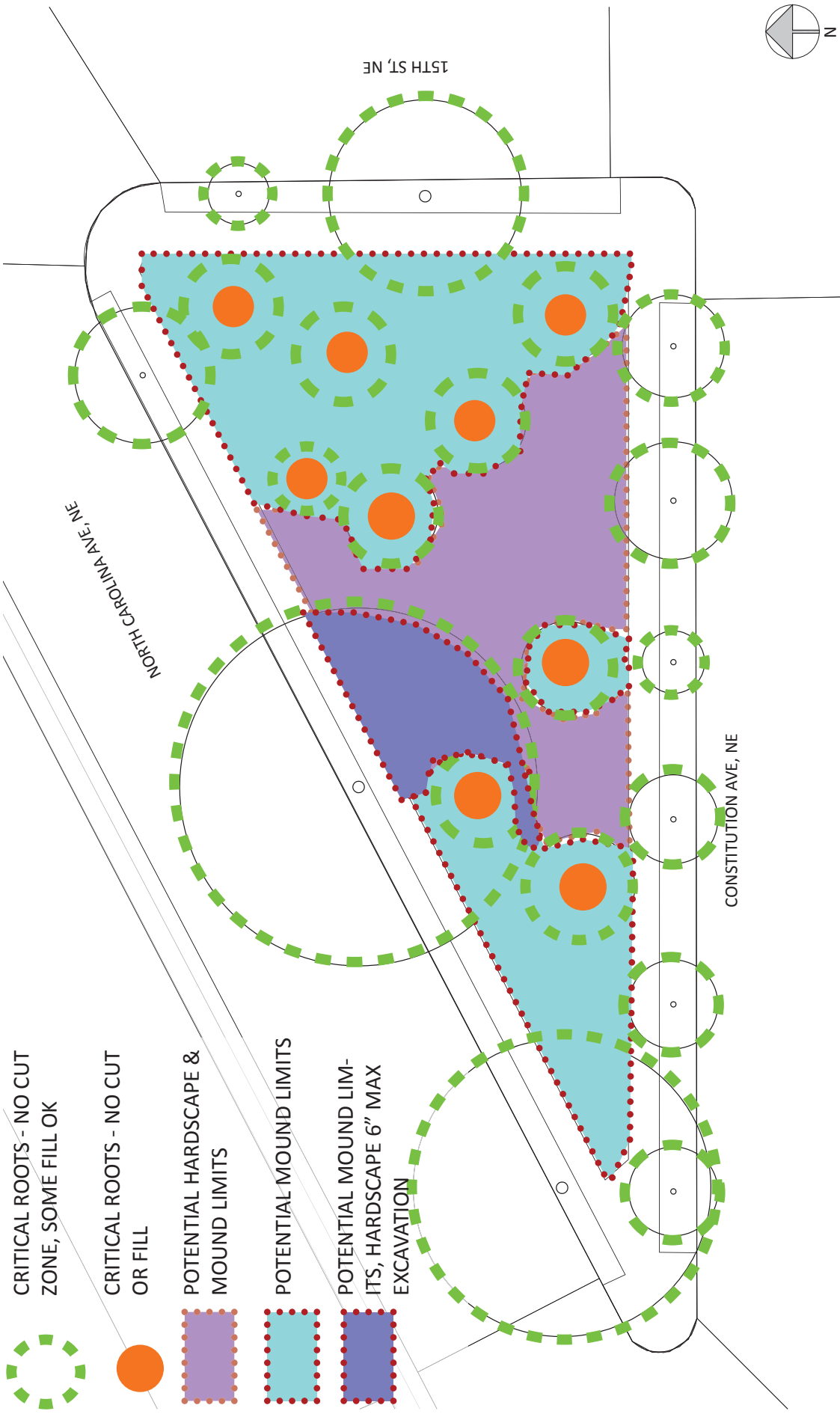
SITE ANALYSIS

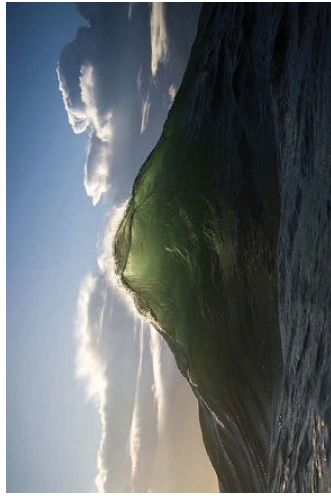
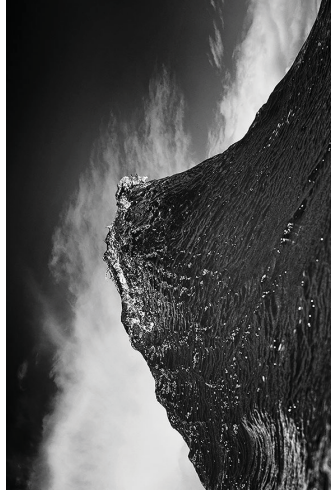
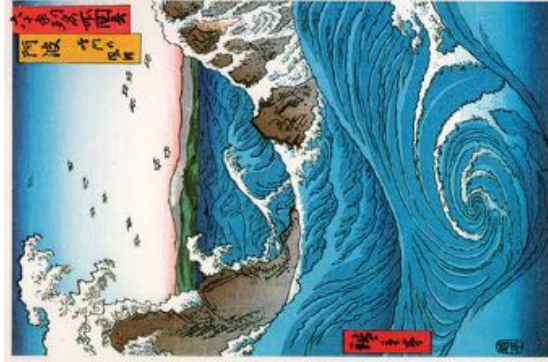
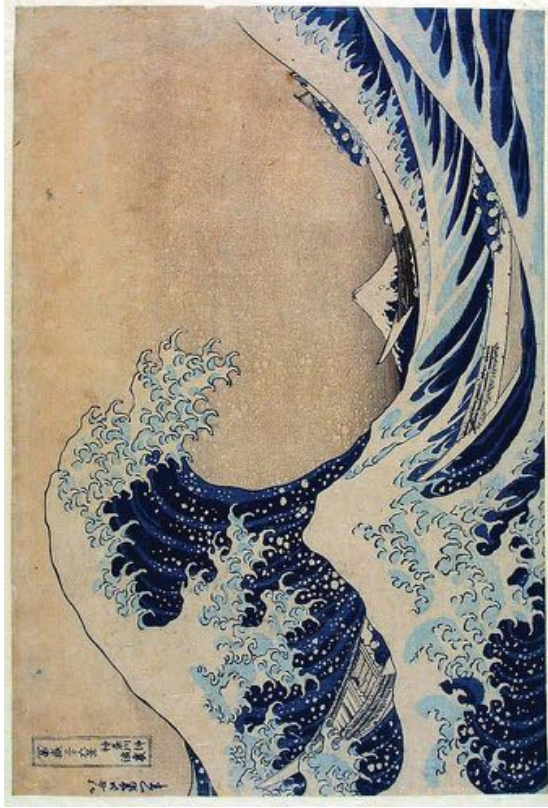


DPR ZEN PARKS | August 17, 2015

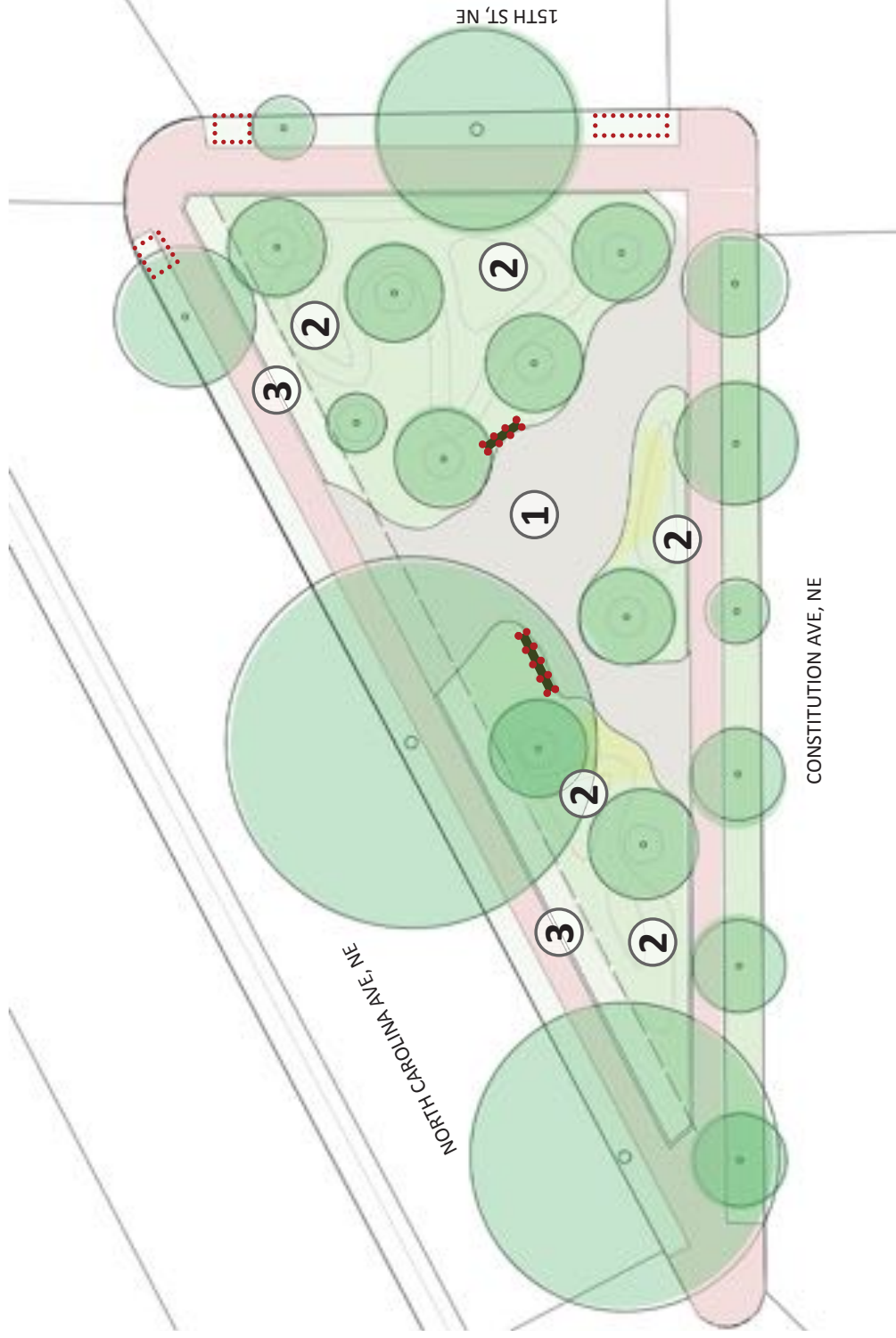
SITE PHOTOS

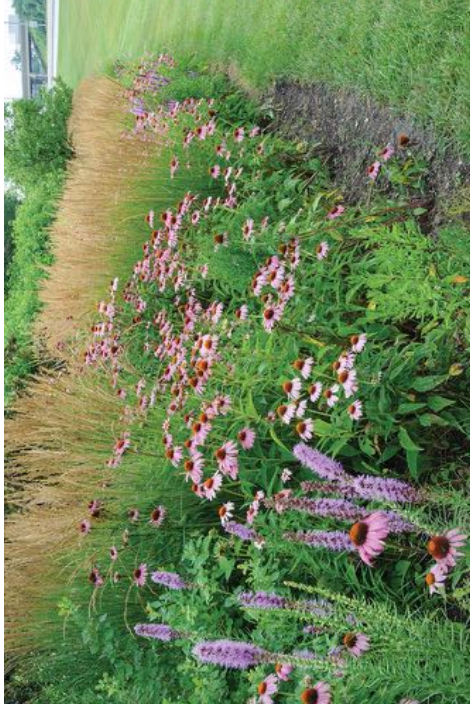
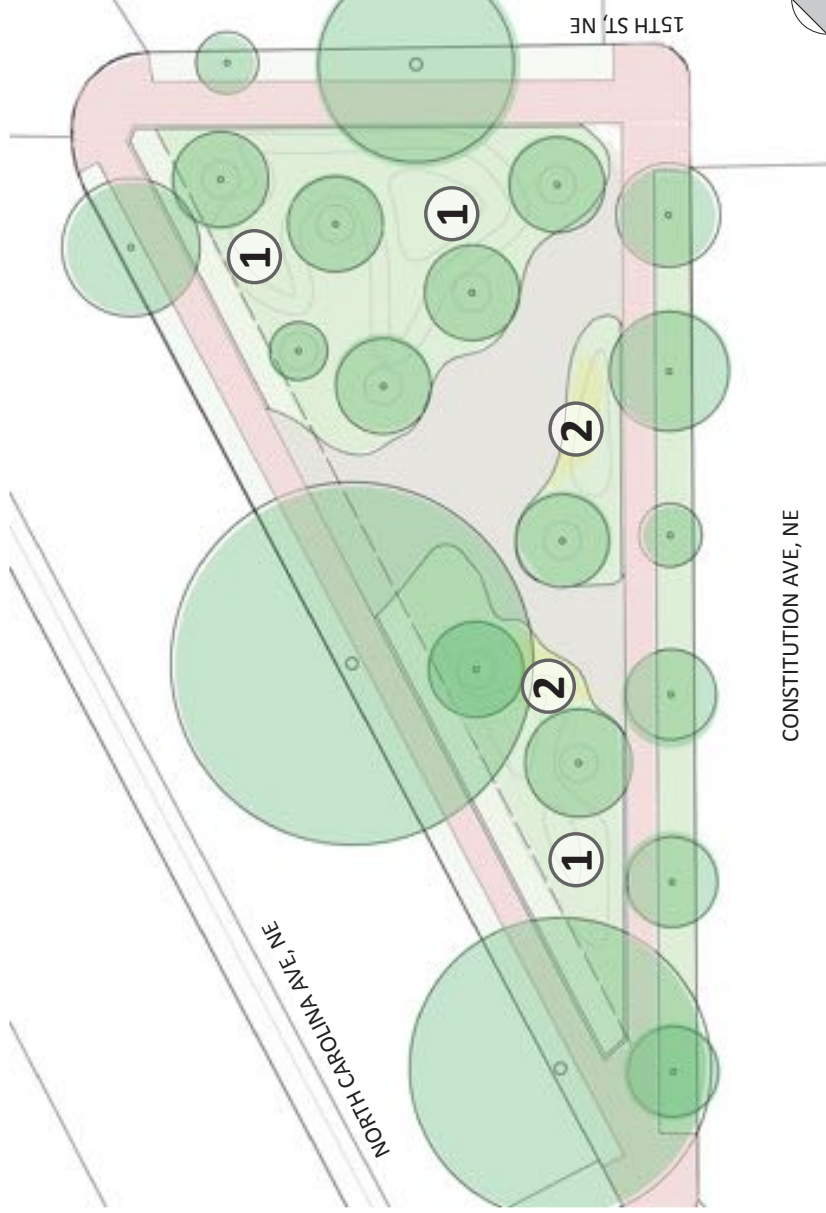






- ① NEW PAVING
- ② PLANTED MOUND
- ③ 5FT GRASS DOG WALK
-  BENCH
-  POTENTIAL BIKE RACK LOCATIONS





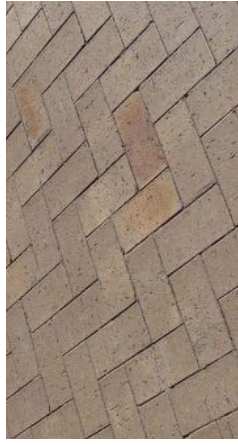
① GARDEN MOUNDS: ORNAMENTAL GROUND COVER MOUNDS



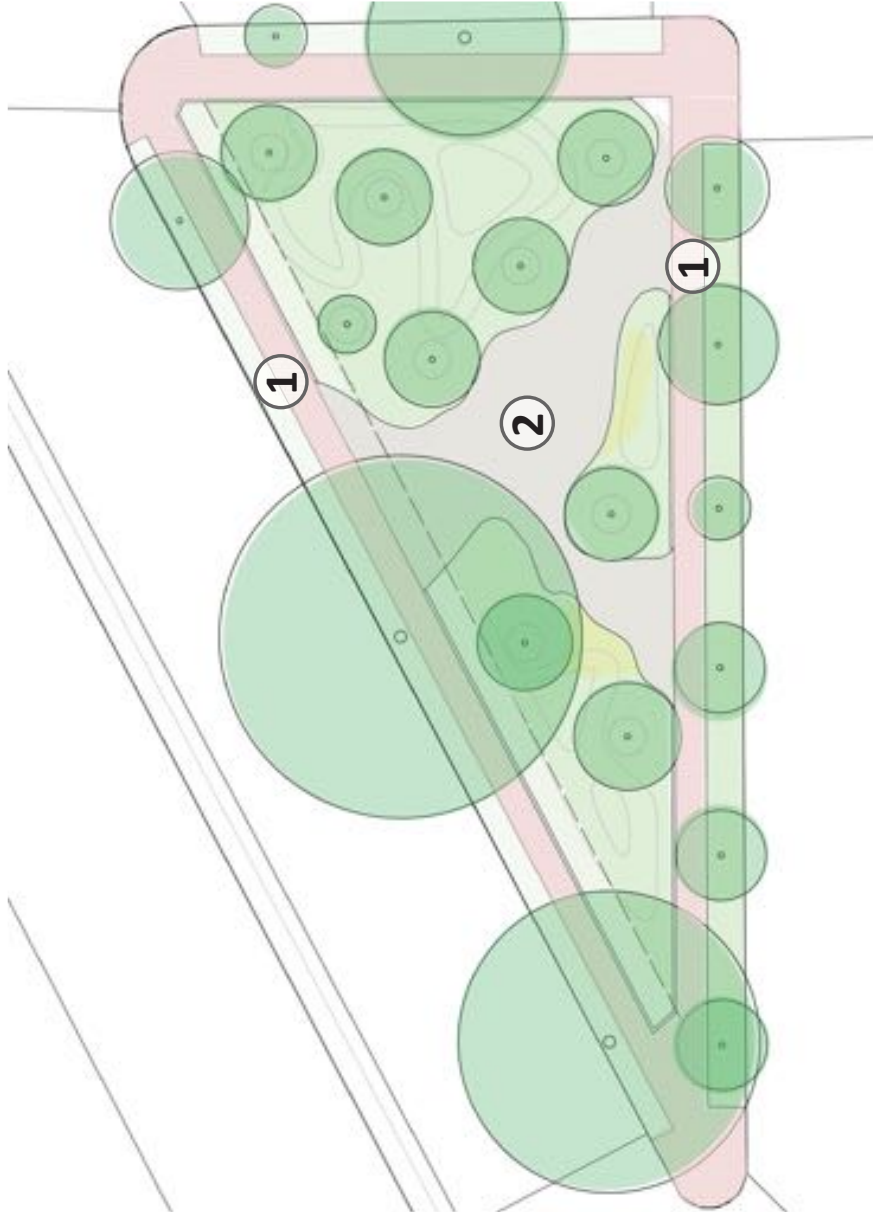
② SITTING MOUNDS: LAWN OR SYNTHETIC TURF MOUNDS



① SIDEWALK BRICK PAVING



② PLAZA BRICK PAVING



**PARK WIDE
FREE**



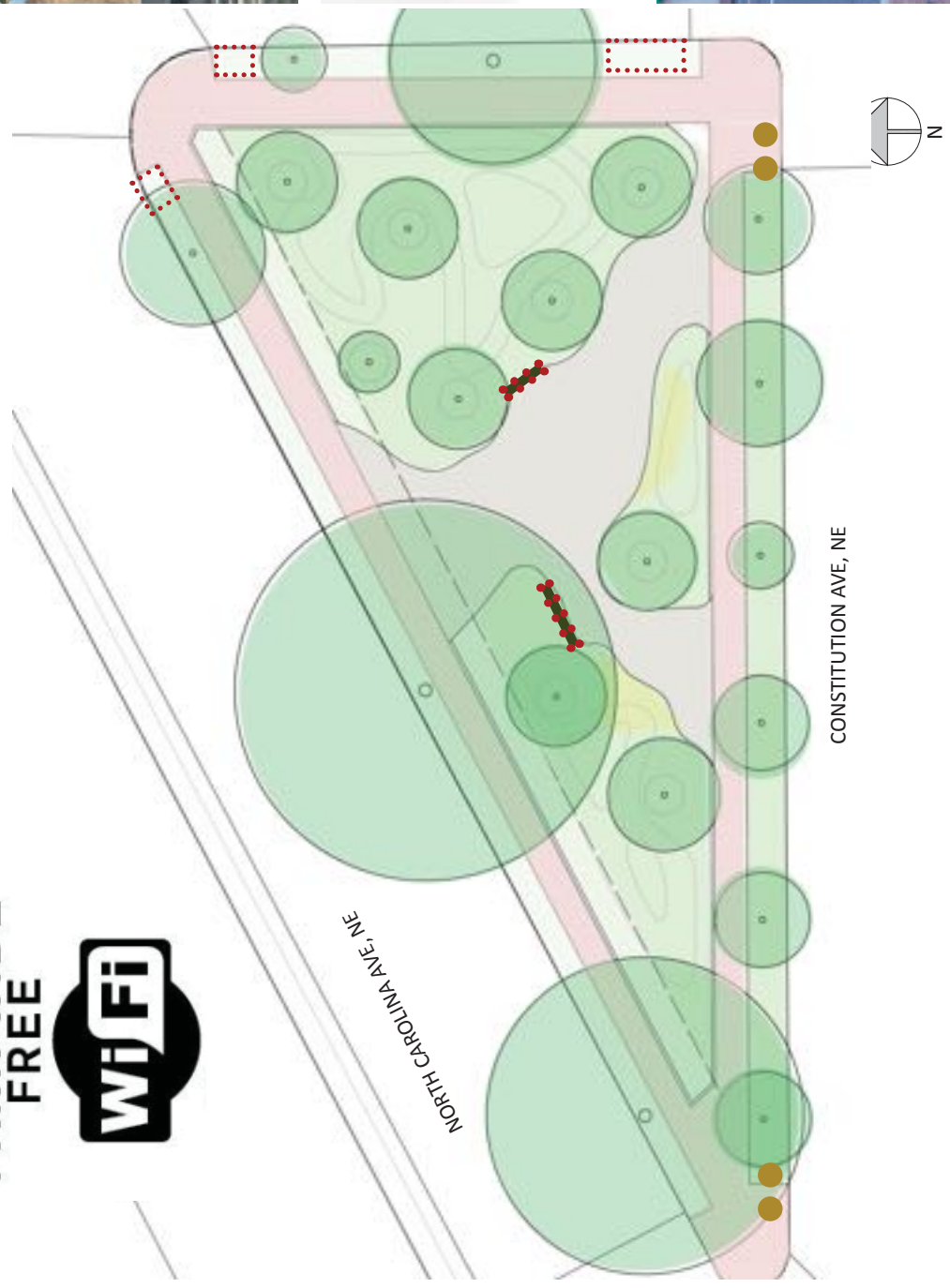
BENCH



**POTENTIAL
BIKE RACK
LOCATIONS**



**STANDARD
DDOT TRASH
& RECYCLE
RECEPTACLES**





Nandina domestica 'Harbour Dwarf'
(Heavenly Bamboo)



Ilex verticillata 'Red Sprite'
(Winterberry)



Rhododendron prinophyllum
(Early Azalea)



Ilex glabra 'Compacta' (Inkberry)



Fothergilla gardenii
(Dwarf Fothergilla)



Taxus x media
'Densiflormis' (Yew)



Clethra alnifolia 'Hummingbird'
(Summersweet)



Juniperus horizontalis 'Lime Glow'
(Creeping Juniper)



Pennisetum alopecuroides 'Piglet'
(Fountain Grass)



Rudbeckia fulgida
(Black Eyed Susan)



Heuchera americana (Coralbells)



Ophiopogon japonicus.
(Mondo Grass)



Thymus serpyllum (Creeping Thyme)



Rhus aromatica 'Gro-Low'
(Fragrant Sumac)



Echinacea purpurea
(Coneflower)



Cotoneaster adpressus 'Little Gem' (Summersweet)