

CAPITOL HILL HOSPITAL CONDOMINIUMS

WASHINGTON, DC

OWNER/DEVELOPER
CAPITOL HILL GROUP

ARCHITECTS
SHALOM BARANES ASSOCIATES

LAND USE COUNSEL
ARNOLD & PORTER, LLP



DRAWING INDEX

| NO. | TITLE |
|-----|--|
| -- | COVER SHEET |
| S1 | SITE AERIAL PHOTO |
| S2 | SITE PHOTOGRAPHS |
| S3 | SITE PHOTOGRAPHS |
| S4 | EXISTING BUILDING ELEVATIONS |
| S5 | EXISTING BUILDING ELEVATIONS |
| S6 | EXISTING SITE PLAN |
| A0 | PROJECT DESCRIPTION |
| A1 | 3-D MODEL VIEWS |
| A2 | GROUND FLOOR PLAN |
| A3 | TYP. FLOOR PLAN |
| A4 | FIFTH FLOOR PLAN |
| A5 | ROOF PLAN |
| A6 | B-2 PARKING PLAN |
| A7 | SOUTH AND NORTH ELEVATIONS |
| A8 | EAST AND WEST ELEVATIONS |
| A9 | LONGITUDINAL SECTION AND COURTYARD ELEVATION |
| A10 | CROSS SECTION AND COURTYARD ELEVATION |



Aerial View of Site

CAPITOL HILL HOSPITAL, N. E. WASHINGTON, D. C.

HPRB CONCEPT SUBMISSION

EXISTING SITE PHOTO

SI

CAPITOL HILL GROUP

N.T.S. | 24 February 2008 | copyright © 2004/2008, P.C.

shalom baranes associates

architects



View of Existing South Facade and Southwest Corner



View of Existing East Elevation

CAPITOL HILL HOSPITAL, N. E. WASHINGTON, D. C.

HPRB CONCEPT SUBMISSION

SITE PHOTOS

S2

CAPITOL HILL GROUP

N.T.S. | 24 February 2008 | copyright © 2004 shal.com

shalom baranes associates

architects



Northwest Corner View at C and 7th Streets, NE



Northeast Corner View at C and 8th Streets, NE



Southeast Corner View at 8th Street and Constitution Ave., NE

CAPITOL HILL HOSPITAL, N. E. WASHINGTON, D. C.

HPRB CONCEPT SUBMISSION

SITE PHOTOS | S3

CAPITOL HILL GROUP

N.T.S. | 24 February 2008 | copyright © 2004 shaa, PC

shalom baranes associates architects



EXISTING EAST ELEVATION



EXISTING WEST ELEVATION



CAPITOL HILL HOSPITAL, N. E. WASHINGTON, D. C.

CAPITOL HILL GROUP | 1" = 40'-0" | 26 February 2008 | copyright, © 2004 skid, owing, merrett, pc

EXISTING - ELEVATIONS

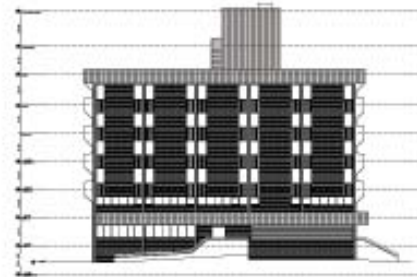
S4

shalom baranes associates

architects



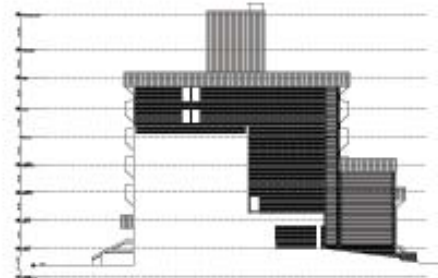
EXISTING NORTH ELEVATION



EXISTING NORTH ELEVATION



EXISTING SOUTH ELEVATION



EXISTING SOUTH ELEVATION



CAPITOL HILL HOSPITAL, N. E. WASHINGTON, D. C.

CAPITOL HILL GROUP

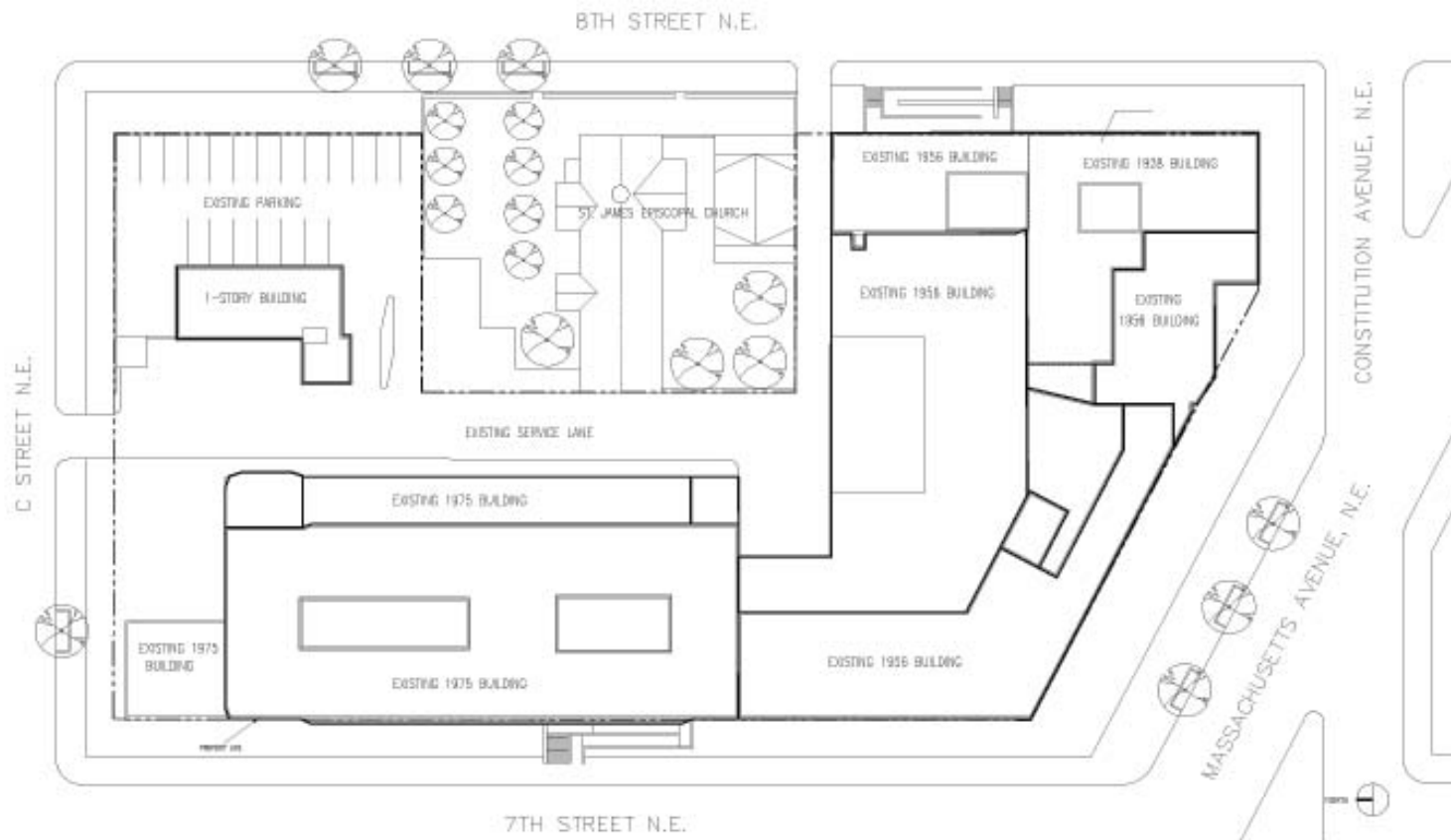
| 1" = 40'-0" | 24 February 2005 | copyright, © 2004/05, PA

EXISTING - ELEVATIONS

S5

shalom baranes associates

architects





CURRENT PROPOSAL
KEY PLAN



EXISTING BUILDING CONFIGURATION



CURRENT PROPOSAL
(SEE SHEET A1 FOR ADDITIONAL VIEWS)



CAPITOL HILL HOSPITAL, N. E. WASHINGTON, D. C

HPRB CONCEPT SUBMISSION

3-DIMENSIONAL MODEL VIEWS

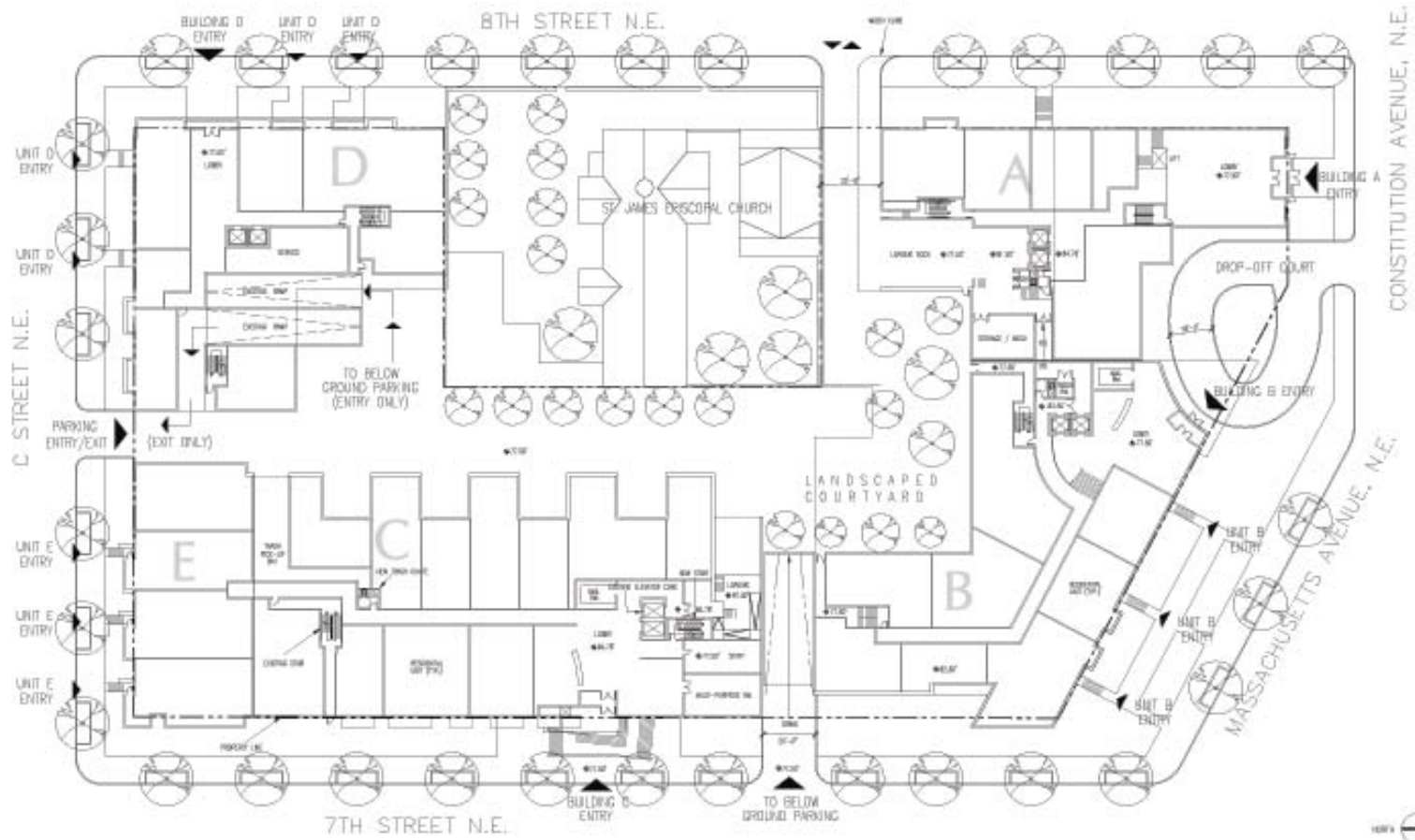
A1

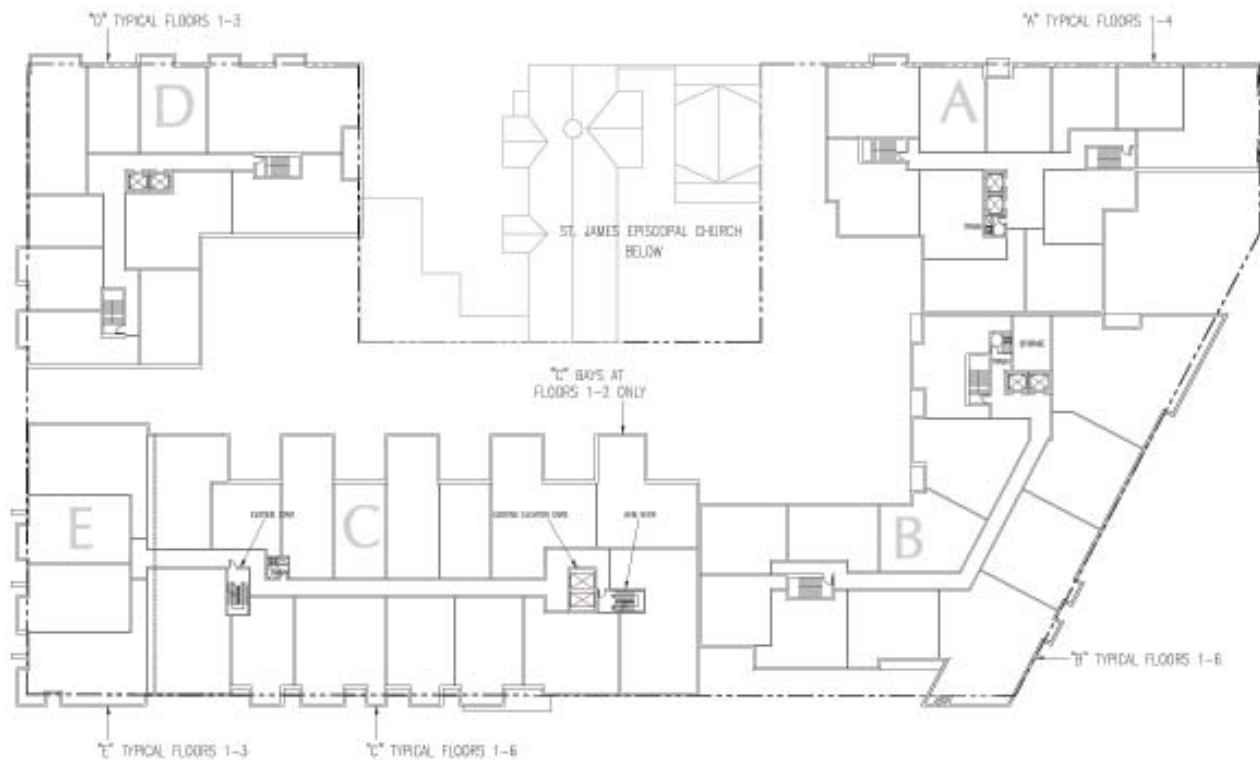
CAPITOL HILL GROUP

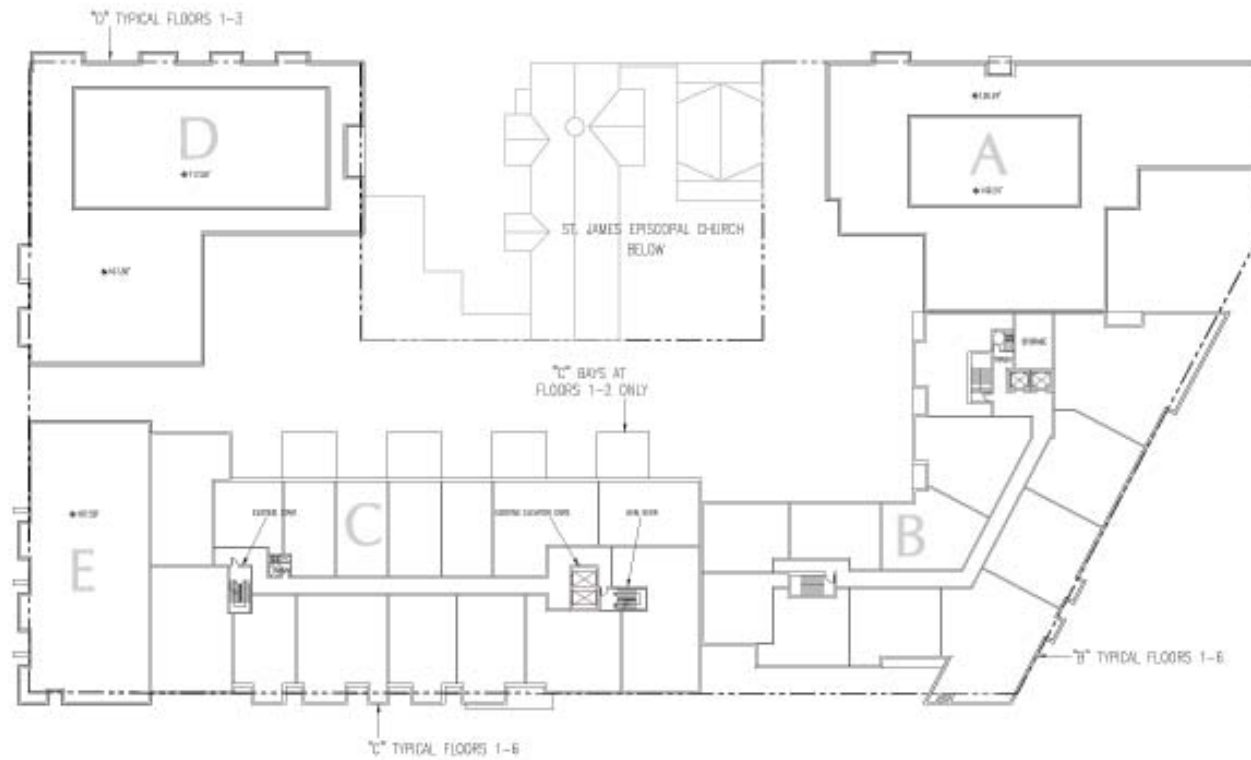
N.T.S. | 24 February 2005 | copyright, © 2004 sba, pc

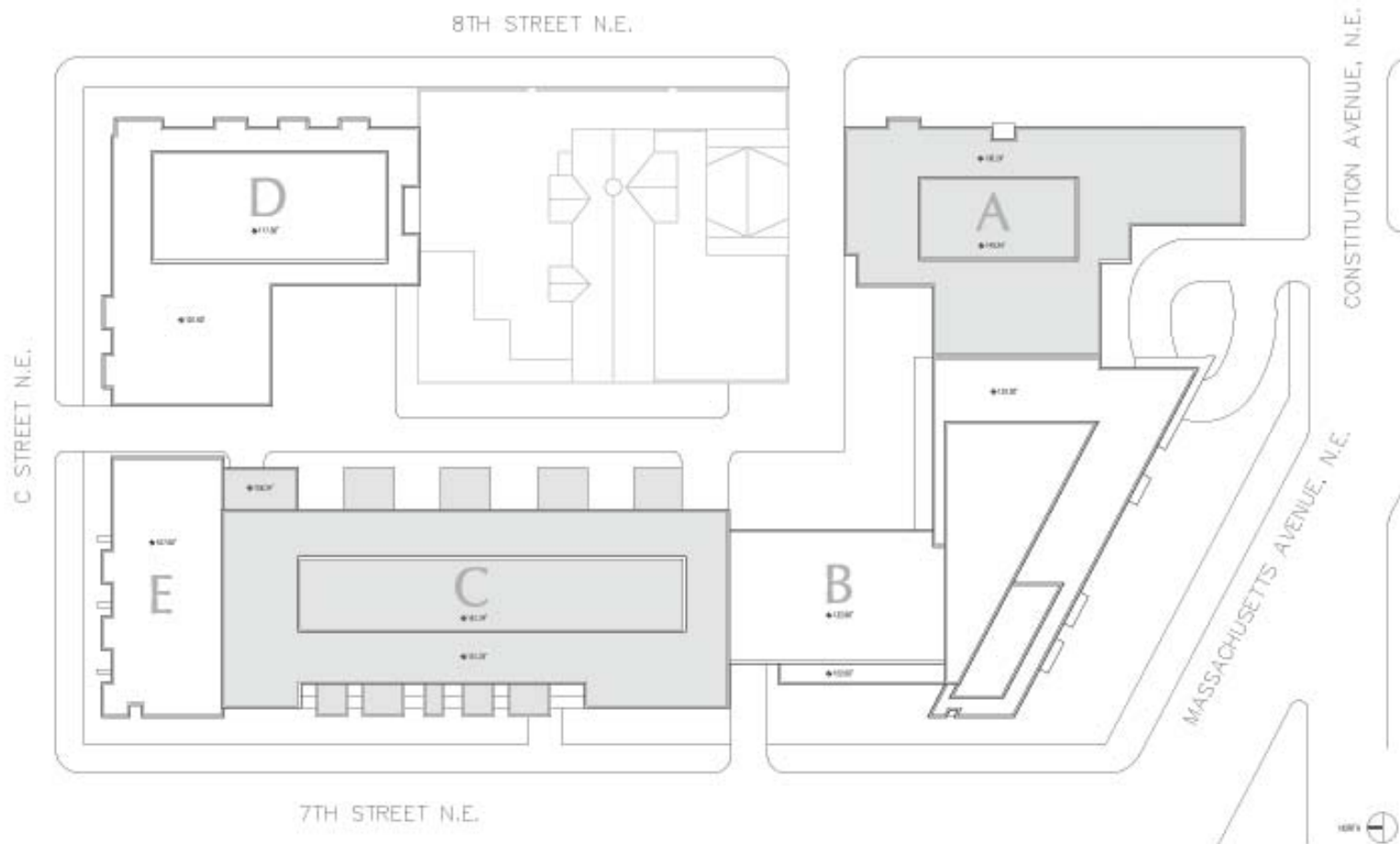
shalom baranes associates

architects









CAPITOL HILL HOSPITAL, N. E. WASHINGTON, D. C

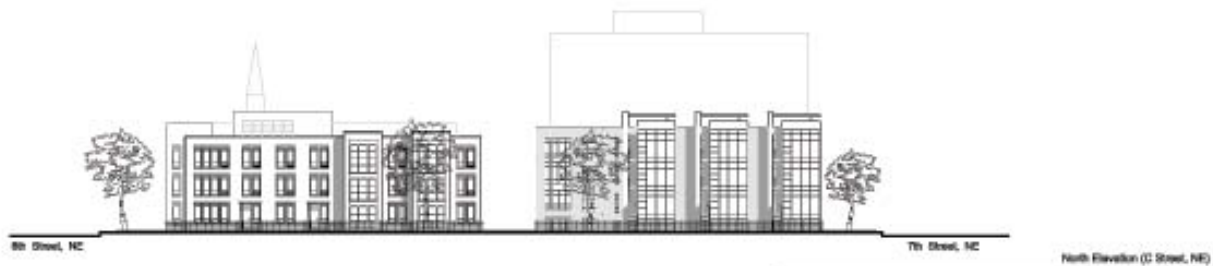
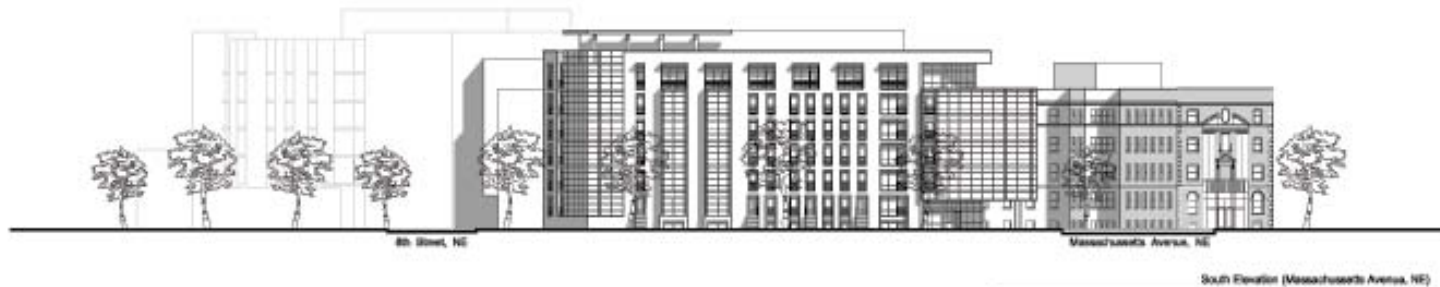
HPRB CONCEPT SUBMISSION

ROOF PLAN | A5

CAPITOL HILL GROUP | 1"-40'-0" | 24 February 2005 | copyright, © 2004 shb, pc

shalom baranes associates | architects





CAPITOL HILL HOSPITAL, N. E. WASHINGTON, D. C

HPRB CONCEPT SUBMISSION

SOUTH AND NORTH ELEVATIONS

A7

CAPITOL HILL GROUP | N.T.S. | 24 February 2005 | copyright, © 2004/05, P0

shalom baranes associates

architects



CAPITOL HILL HOSPITAL, N. E. WASHINGTON, D. C

HPRB CONCEPT SUBMISSION

EAST AND WEST ELEVATIONS

A8

CAPITOL HILL GROUP | N.T.S. | 24 February 2005 | copyright, © 2004/05, P0

shalom baranes associates architects



| | | |
|----------|---------|---------|
| 6 | Res. | Res. |
| 5 | Res. | Res. |
| 4 | Res. | Res. |
| 3 | Res. | Res. |
| 2 | Res. | Res. |
| 1 | Res. | Res. |
| Basement | Res. | Res. |
| B-1 | Parking | Parking |
| B-2 | Parking | Parking |

Longitudinal Section And Courtyard Elevation