

## AGENDA

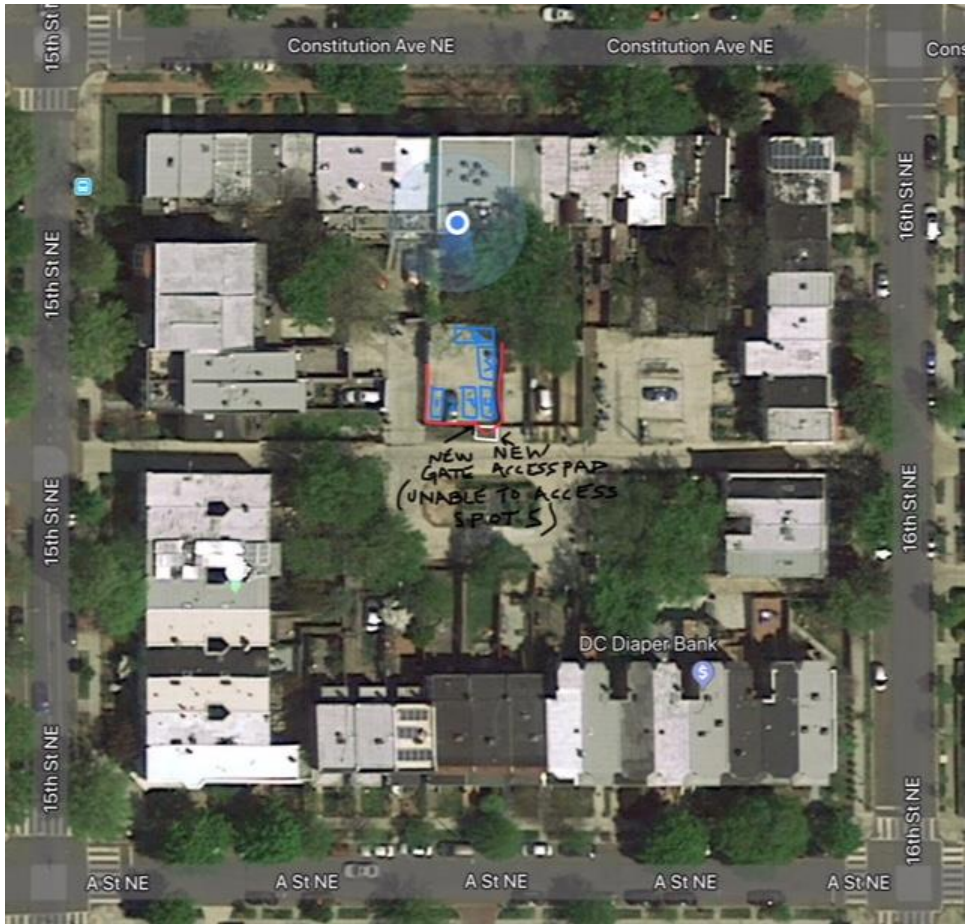
ANC 6A Transportation & Public Space Committee Meeting  
Capitol Hill Towers, 900 G Street NE  
Monday, June 17, 2019 at 7:00 pm

- I. Call meeting to order
- II. Introductions & Announcements (5 minutes)
- III. Community Comment (5 minutes)
  
- IV. Old Business
  - A. Review of report from DDoT on list of high-priority safety locations (5 minutes) - attached.
  - B. Continue implementation of plan (approved by Commissioners at 5/9 meeting) to identify additional bike share station locations (and bike/scooter racks) and ascertain public support for same. (50 minutes - Nelson)
    - Hassan Christian reports that DDoT does not have any current plans to add or eliminate bikeshare locations within ANC 6A. Right now, they are updating the Bikeshare expansion plans and should have the finished update finalized in six months. Data for 6A bikes at <http://cabitracker.com/> which shows average bike and dock availability per station over any period of time. More detailed system data is here: <https://www.capitalbikeshare.com/system-data>
    - Results of solicitation for community input will be presented. Draft list below.
  
- V. New Business
  - A. Presentation by Todd Smith, owner 1519 Constitution Ave NE #301, wishes to add a gate in the rear to access parking spaces. Proposing two sway type doors with hinges and diagonal supports and a short concrete pad onto the alley through a small strip of public space. (20 minutes)
  - B. New sidewalk café (unenclosed) at 1025 H St. NE #10726471 (15 minutes)
  - C. Presentation of revised plans submitted by owner/applicant Andrew Botticello, Rosedale Development LLC] for alley lots (179-186) located behind the 17 Solar Condo property at 410-417 17th Street NE. - (30 minutes)
  - D. Additional public space applications, if submitted prior to meeting date
  
- VI. Community Comment (time permitting)
- VII. Adjourn meeting

***Suggested/Proposed Bikeshare locations:***

1. Traffic triangle between Massachusetts Ave NE (900 block NE), 9th St NE & A St NE
2. 12th and Florida NE
3. Extension to rack, 15th & East Capitol Sts. NE
4. C Street NE and 17th Street NE
5. 17th and D NE
6. Triangle, 16th & C Sts NE at fork w/North Carolina Ave
- 6b. SW corner, F St. NE, Maryland Ave., NE @ 12th St. NE
7. Maryland & 11st St NE, north side of Maryland (kid's park); likely closer to 12th street edge
8. Extend rack at Miner ES, 601 15th St. NE
9. Chick-fil-a and Pierce School Lofts at intersection of 600 block 14th St NE, Maryland Ave NE & G St NE, off 14th St.
- 9b. Maryland Ave & 14th St. NE, apartment building at NW corner
- 9c. Adjacent former Argonaut at 15th and H St. NE
10. Triangle, 14th & North Carolina Ave & Constitution Ave NE
11. Intersection at 8th & H St NE
12. Slow Nickel Laundromat on 11th @ C S NE
13. North side East Capitol Street NE, in front of Eastern High School
14. 8th and K NE
15. Kingsman Field, extend bike racks on 1300 block of D St. NE

V-A - rear of 1519 Constitution Ave NE



## Response from DDoT regarding ANC 6A safety priorities:

1. 15th St. NE between East Capitol St. & C St. NE. Speeding and difficulties related to the layout of the intersection at C St. Suggest bulb outs/curb extensions, no right on red at North Carolina and 15th and increased visibility and striping of crosswalks.

*DDOT will add new high visibility ladder crosswalks at 15<sup>th</sup> and C Streets NE and 15<sup>th</sup> and North Carolina Carolina Avenue NE. We will conduct a traffic calming study by collecting data at multiple points along this corridor. This has been sent out for data collection.*

2. Intersection of East Capitol St., Massachusetts Ave. & 11th St. NE. Confusing traffic pattern and signage contributing to problems that extend to 1100-1200 blocks of East Capitol, 1000 block of Massachusetts, and unit and 100 blocks of 11th. Speeding is also a factor. Suggest re-evaluating signage and traffic engineering, and traffic calming measures.

*DDOT will review signing and pavement markings along the section and advance traffic calming measures to the ANC. This is currently under review.*

3. Unit-400 blocks of 17th St. NE. Speeding and conflict with pedestrians on school route. Suggested remedies include raised crosswalks at 17th St. and Constitution Ave./17th & C Sts., in addition to red light camera. Also consider implication of design differences between 17th St north versus south of East Capitol.

*17<sup>th</sup> Street is a minor arterial and therefore would not be a candidate for raised crosswalks. We have sent these blocks out for data collection to inform future considerations along this section. Red light camera requests should be directed to MPD.*

4. Unit-400 blocks of 10th St. NE. Speeding, excessive traffic, frequent used by commercial vehicles. Requesting "No Commercial Vehicle" signage; possible solutions include speed humps, raised crosswalks, making one block one-way if this can be done without increasing traffic on 9th and 11th Sts. NE.

*The request for "No Thru Truck" signage has been referred to freight planner Laura MacNeil. We have sent these blocks out for data collection and will determine speed humps locations between the unit block and 400 block of 10<sup>th</sup> Street NE. Speed hump locations will be shared with the ANC for approval/resident coordination prior to being sent out for installation.*

5. Intersection at 10th and East Capitol Streets NE. Numerous collisions. Need for stop sign or traffic light; this might have the additional beneficial effect of reducing traffic and speeding on blocks north of the intersection. Note: the TPS Committee is not satisfied with the response of DDoT as outlined in the traffic study results provided in February

*DDOT's Notice of Intent to install All Way Stop Control at this intersection was sent to ANC 6A on Friday May 17, 2019. After the 30-business day comment period, a work order will be issued for installation.*

6. Intersection at 19th St. and Constitution Ave. NE. Speeding in unit, 100 and 200 block of 19th, Difficult to cross and adjacent to two schools. Suggestions include raised crosswalks, or a 4-way stop at 19th and Constitution.

*DDOT has studied this intersection and will be updating signage and will install a driver feedback sign along 19th St.*

7. Intersection at 8th and D Sts. NE. Pedestrian near-misses. Suggesting raised crosswalks and four-way stop.

*DDOT's Notice of Intent to install All Way Stop Control at this intersection was sent to ANC 6A on Wednesday May 1, 2019. After the 30-business day comment period, a work order will be issued for installation.*

8. Intersection at 8th and F Sts. NE. Stop-light running and speeding - of particular concern for senior

citizens from Capitol Hill Towers. Suggesting raised crosswalks, curb extensions or pedestrian refuge.

*There was active utility work at this intersection when it was first reviewed. DDOT will revisit for traffic calming and safety after completion of work.*

9. Intersection at 8th and G Sts. NE. Stop-light running and speeding - of particular concern for senior citizens from Capitol Hill Towers. Suggesting raised crosswalks, curb extensions or pedestrian refuge.

*DDOT will install curb extensions at this intersection. The bulb out design is in progress.*

10. Unit-400 blocks of Tennessee Ave. NE. Speeding, Pedestrian Conflicts at Crosswalks. TPS noted that planned changes to intersection at Tennessee, Constitution & 13th will improve pedestrian safety but are unlikely to improve speeding south or north of said intersection. Traffic calming measures and raised crosswalks requested.

*DDOT has sent these blocks out for data collection. This data collection will be used to inform potential traffic calming solutions.*

11. Intersection at 14th and G Sts. NE. Chick-Fil-A-related traffic makes wrong-way turn north onto 14th St. as a shortcut. Possibly bulb-out or pylons would make this less tempting.

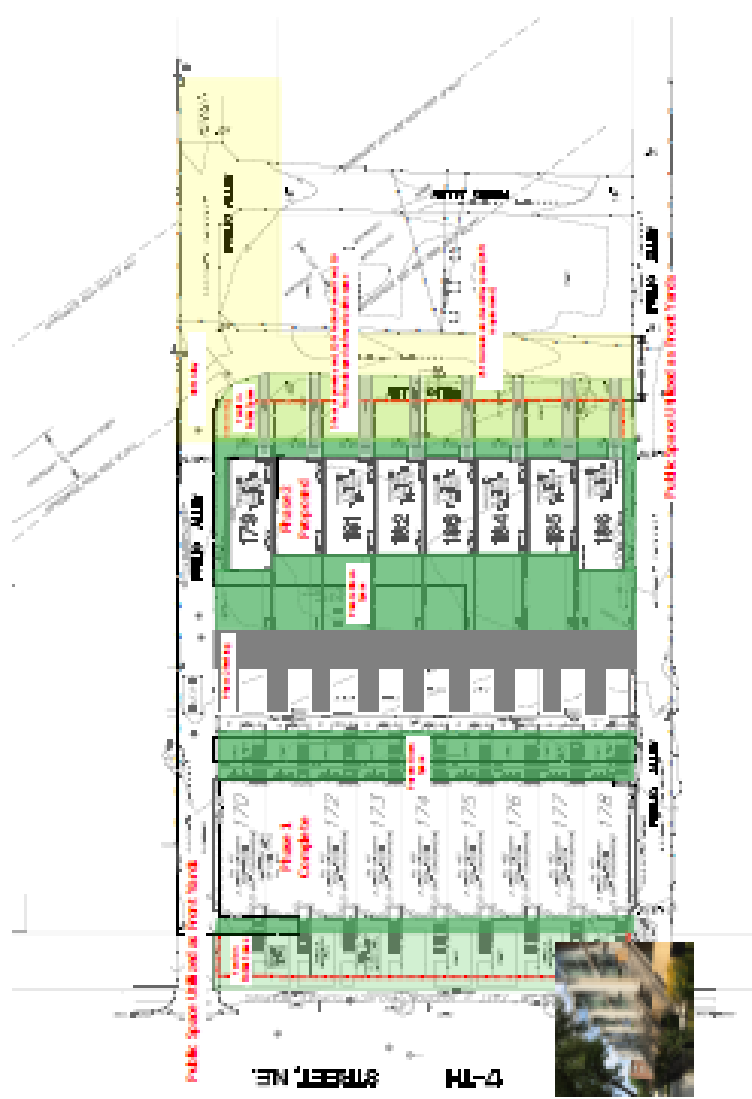
*DDOT has created work orders for the installation of missing 'Do Not Enter' and 'One Way' signage.*

**LEGEND - MATERIALS**

ASPH/FLT	ASPH/FLT
CONCRETE	CONCRETE
GRAVEL	GRAVEL
PAVEMENT	PAVEMENT
LANDSCAPE	LANDSCAPE
...	...

**LEGEND - FINISHES**

ASPH/FLT	ASPH/FLT
CONCRETE	CONCRETE
GRAVEL	GRAVEL
PAVEMENT	PAVEMENT
LANDSCAPE	LANDSCAPE
...	...



**MADDOX**  
 ARCHITECTS  
 1000 17th Street, NE  
 Atlanta, GA 30316  
 404.525.1111

**CONTRACTOR**  
 [Name]  
 [Address]  
 [City, State, Zip]  
 [Phone]

LOT 179-186  
 SQUARE FEET

17TH STREET, NE  
 18TH STREET, NE



**SITE PLAN EXHIBIT**  
 C340300